

Trombone - Euphonium Scales

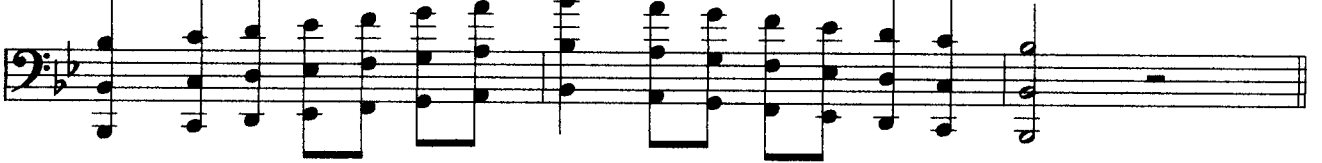
C Major



F Major



B-Flat Major



E-Flat Major



A-Flat Major



D-Flat Major



G-Flat Major



G-Major

Musical notation for the G-Major scale in bass clef. The scale starts on G2 and proceeds through the notes G, A, B, C, D, E, F#, G, A, B, C, D, E, F#, G. The notation includes a key signature of one sharp (F#) and a common time signature.

D-Major

Musical notation for the D-Major scale in bass clef. The scale starts on D2 and proceeds through the notes D, E, F#, G, A, B, C, D, E, F#, G, A, B, C, D. The notation includes a key signature of two sharps (F# and C#) and a common time signature.

A-Major

Musical notation for the A-Major scale in bass clef. The scale starts on A2 and proceeds through the notes A, B, C, D, E, F#, G, A, B, C, D, E, F#, G. The notation includes a key signature of three sharps (F#, C#, G#) and a common time signature.

E-Major

Musical notation for the E-Major scale in bass clef. The scale starts on E2 and proceeds through the notes E, F#, G, A, B, C, D, E, F#, G, A, B, C, D, E. The notation includes a key signature of four sharps (F#, C#, G#, D#) and a common time signature.

B-Major

Musical notation for the B-Major scale in bass clef. The scale starts on B2 and proceeds through the notes B, C, D, E, F#, G, A, B, C, D, E, F#, G, A, B. The notation includes a key signature of five sharps (F#, C#, G#, D#, A#) and a common time signature.

A Minor

Musical notation for the A Minor scale in bass clef. The scale starts on A2 and proceeds through the notes A, B, C, D, E, F, G, A, B, C, D, E, F, G. The notation includes a key signature of no sharps or flats and a common time signature.

A Minor Harmonic

Musical notation for the A Minor Harmonic scale in bass clef. The scale starts on A2 and proceeds through the notes A, B, C, D, E, F, G, A, B, C, D, E, F#, G, A. The notation includes a key signature of no sharps or flats and a common time signature.

A Minor Melodic

Musical notation for A Minor Melodic in bass clef. The piece consists of a single melodic line with a series of eighth notes and quarter notes, ending with a whole note. The key signature has one flat (B-flat).

D Minor

Musical notation for D Minor in bass clef. The piece consists of a single melodic line with a series of eighth notes and quarter notes, ending with a whole note. The key signature has two flats (B-flat and E-flat).

D Minor Harmonic

Musical notation for D Minor Harmonic in bass clef. The piece consists of a single melodic line with a series of eighth notes and quarter notes, ending with a whole note. The key signature has two flats (B-flat and E-flat).

D Minor Melodic

Musical notation for D Minor Melodic in bass clef. The piece consists of a single melodic line with a series of eighth notes and quarter notes, ending with a whole note. The key signature has two flats (B-flat and E-flat).

G Minor

Musical notation for G Minor in bass clef. The piece consists of a single melodic line with a series of eighth notes and quarter notes, ending with a whole note. The key signature has two flats (B-flat and E-flat).

G Minor Harmonic

Musical notation for G Minor Harmonic in bass clef. The piece consists of a single melodic line with a series of eighth notes and quarter notes, ending with a whole note. The key signature has two flats (B-flat and E-flat).

G Minor Melodic

Musical notation for G Minor Melodic in bass clef. The piece consists of a single melodic line with a series of eighth notes and quarter notes, ending with a whole note. The key signature has two flats (B-flat and E-flat).

C Minor

Musical notation for the C Minor scale in bass clef. The scale consists of the notes C, D, E-flat, F, G, A-flat, B-flat, and C. The notation shows a sequence of eighth notes across the staff, with a final whole note C.

C Minor Harmonic

Musical notation for the C Minor Harmonic scale in bass clef. The scale consists of the notes C, D, E-flat, F, G, A-flat, B-flat, and C, with a tritone interval between A-flat and B-flat. The notation shows a sequence of eighth notes across the staff, with a final whole note C.

C Minor Melodic

Musical notation for the C Minor Melodic scale in bass clef. The scale consists of the notes C, D, E-flat, F, G, A-flat, B-flat, and C, with a tritone interval between A-flat and B-flat. The notation shows a sequence of eighth notes across the staff, with a final whole note C.

F Minor

Musical notation for the F Minor scale in bass clef. The scale consists of the notes F, G, A-flat, B-flat, C, D-flat, E-flat, and F. The notation shows a sequence of eighth notes across the staff, with a final whole note F.

F Minor Harmonic

Musical notation for the F Minor Harmonic scale in bass clef. The scale consists of the notes F, G, A-flat, B-flat, C, D-flat, E-flat, and F, with a tritone interval between D-flat and E-flat. The notation shows a sequence of eighth notes across the staff, with a final whole note F.

F Minor Melodic

Musical notation for the F Minor Melodic scale in bass clef. The scale consists of the notes F, G, A-flat, B-flat, C, D-flat, E-flat, and F, with a tritone interval between D-flat and E-flat. The notation shows a sequence of eighth notes across the staff, with a final whole note F.

B-flat Minor

Musical notation for the B-flat Minor scale in bass clef. The scale consists of the notes B-flat, C, D, E-flat, F, G, A-flat, and B-flat. The notation shows a sequence of eighth notes across the staff, with a final whole note B-flat.

B-flat Minor Harmonic

Musical notation for the B-flat Minor Harmonic scale in bass clef. The scale is written in a single line, starting on B-flat and ending on B-flat. It consists of a sequence of notes: B-flat, C, D-flat, E-flat, F, G, A-flat, B-flat, C, D-flat, E-flat, F, G, A-flat, B-flat. The notes are grouped into pairs of eighth notes, with a final quarter note B-flat.

B-flat Minor Melodic

Musical notation for the B-flat Minor Melodic scale in bass clef. The scale is written in a single line, starting on B-flat and ending on B-flat. It consists of a sequence of notes: B-flat, C, D-flat, E-flat, F, G, A-flat, B-flat, C, D-flat, E-flat, F, G, A-flat, B-flat. The notes are grouped into pairs of eighth notes, with a final quarter note B-flat.

E-flat Minor

Musical notation for the E-flat Minor scale in bass clef. The scale is written in a single line, starting on E-flat and ending on E-flat. It consists of a sequence of notes: E-flat, F, G, A-flat, B-flat, C, D-flat, E-flat, F, G, A-flat, B-flat, C, D-flat, E-flat. The notes are grouped into pairs of eighth notes, with a final quarter note E-flat.

E-flat Minor Harmonic

Musical notation for the E-flat Minor Harmonic scale in bass clef. The scale is written in a single line, starting on E-flat and ending on E-flat. It consists of a sequence of notes: E-flat, F, G, A-flat, B-flat, C, D-flat, E-flat, F, G, A-flat, B-flat, C, D-flat, E-flat. The notes are grouped into pairs of eighth notes, with a final quarter note E-flat.

E-flat Minor Melodic

Musical notation for the E-flat Minor Melodic scale in bass clef. The scale is written in a single line, starting on E-flat and ending on E-flat. It consists of a sequence of notes: E-flat, F, G, A-flat, B-flat, C, D-flat, E-flat, F, G, A-flat, B-flat, C, D-flat, E-flat. The notes are grouped into pairs of eighth notes, with a final quarter note E-flat.

E Minor

Musical notation for the E Minor scale in bass clef. The scale is written in a single line, starting on E and ending on E. It consists of a sequence of notes: E, F, G, A, B, C, D, E, F, G, A, B, C, D, E. The notes are grouped into pairs of eighth notes, with a final quarter note E.

E minor Harmonic

Musical notation for the E minor Harmonic scale in bass clef. The scale is written in a single line, starting on E and ending on E. It consists of a sequence of notes: E, F, G, A, B, C, D, E, F, G, A, B, C, D, E. The notes are grouped into pairs of eighth notes, with a final quarter note E.

E Minor Melodic

B Minor

B Minor Harmonic

B Minor Melodic

F-sharp Minor

F-sharp Minor Harmonic

F-sharp Minor Melodic

C-sharp Minor

A musical staff in bass clef with a key signature of two sharps (F# and C#). The scale is written in a descending sequence of eighth notes: C#4, B3, A3, G#3, F#3, E3, D3, C#2, B1, A1, G#1, F#1, E1, D1, C#1. The notes are grouped in pairs with stems pointing downwards.

C-sharp Minor Harmonic

A musical staff in bass clef with a key signature of two sharps. The scale is written in a descending sequence of eighth notes, with natural accidentals on the 3rd, 6th, and 9th degrees. The notes are: C#4, B3, A3, G#3, F#3, E3, D3, C#2, B1, A1, G#1, F#1, E1, D1, C#1. The notes are grouped in pairs with stems pointing downwards.

C-sharp Minor Melodic

A musical staff in bass clef with a key signature of two sharps. The scale is written in a descending sequence of eighth notes, with natural accidentals on the 3rd, 6th, and 9th degrees. The notes are: C#4, B3, A3, G#3, F#3, E3, D3, C#2, B1, A1, G#1, F#1, E1, D1, C#1. The notes are grouped in pairs with stems pointing downwards.

G-sharp Minor

A musical staff in bass clef with a key signature of three sharps (F#, C#, G#). The scale is written in a descending sequence of eighth notes: G#4, F#4, E4, D4, C#4, B3, A3, G#3, F#3, E3, D3, C#2, B1, A1, G#1, F#1, E1, D1, C#1. The notes are grouped in pairs with stems pointing downwards.

G-sharp Minor Harmonic

A musical staff in bass clef with a key signature of three sharps. The scale is written in a descending sequence of eighth notes, with natural accidentals on the 3rd, 6th, and 9th degrees. The notes are: G#4, F#4, E4, D4, C#4, B3, A3, G#3, F#3, E3, D3, C#2, B1, A1, G#1, F#1, E1, D1, C#1. The notes are grouped in pairs with stems pointing downwards. The 3rd, 6th, and 9th degrees have an 'x' above them.

G-sharp Minor Melodic

A musical staff in bass clef with a key signature of three sharps. The scale is written in a descending sequence of eighth notes, with natural accidentals on the 3rd, 6th, and 9th degrees. The notes are: G#4, F#4, E4, D4, C#4, B3, A3, G#3, F#3, E3, D3, C#2, B1, A1, G#1, F#1, E1, D1, C#1. The notes are grouped in pairs with stems pointing downwards. The 3rd, 6th, and 9th degrees have an 'x' above them.