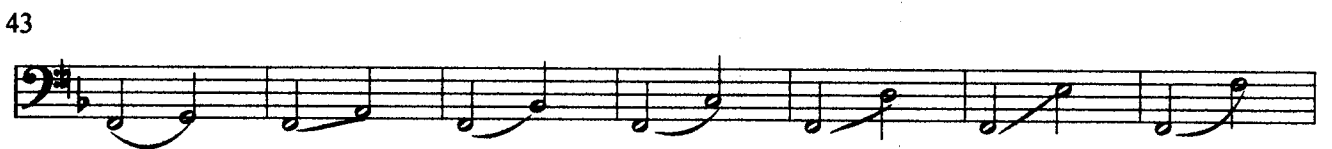
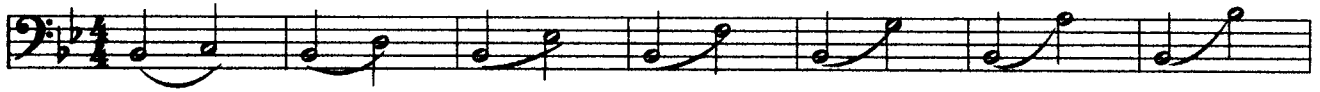


# Euphonium Warm Up



# Euphonium Lip Slurs

0      2      1      12      23      4(13)      24(123)

Basic Lip Slur Exercise

If possible, add another partial

Detailed description: This block shows a musical staff in bass clef with a key signature of one flat and a 4/4 time signature. The notes are G2, A2, B2, C3, D3, E3, F3, G3, A3, B3, C4, D4, E4, F4, G4, A4, B4, C5. Fingerings are indicated above the notes: 0, 2, 1, 12, 23, 4(13), and 24(123). A slur covers the notes from G2 to G4. A second slur covers the notes from G4 to C5. The text 'Basic Lip Slur Exercise' is under the first slur, and 'If possible, add another partial' is under the second slur.

0      2      Etc..

Or another partial

Detailed description: This block shows a musical staff in bass clef with a key signature of one flat and a 4/4 time signature. The notes are G2, A2, B2, C3, D3, E3, F3, G3, A3, B3, C4, D4, E4, F4, G4, A4, B4, C5. Fingerings are indicated above the notes: 0, 2, and Etc.. A slur covers the notes from G2 to G4. Another slur covers the notes from G4 to C5. The text 'Or another partial' is positioned below the first slur.

0      2      Etc..

If you have 2 octaves, go for it!!

Detailed description: This block shows a musical staff in bass clef with a key signature of one flat and a 4/4 time signature. The notes are G2, A2, B2, C3, D3, E3, F3, G3, A3, B3, C4, D4, E4, F4, G4, A4, B4, C5, D5, E5, F5, G5. Fingerings are indicated above the notes: 0, 2, and Etc.. A slur covers the notes from G2 to G4. Another slur covers the notes from G4 to C5. A third slur covers the notes from G4 to G5. The text 'If you have 2 octaves, go for it!!' is positioned below the first slur.

0      2      Etc..

Detailed description: This block shows a musical staff in bass clef with a key signature of one flat and a 4/4 time signature. The notes are G2, A2, B2, C3, D3, E3, F3, G3, A3, B3, C4, D4, E4, F4, G4, A4, B4, C5, D5, E5, F5, G5. Fingerings are indicated above the notes: 0, 2, and Etc.. A slur covers the notes from G2 to G4. Another slur covers the notes from G4 to C5. A third slur covers the notes from G4 to G5. The text '0      2      Etc..' is positioned above the first slur.

0      2      Etc..

Detailed description: This block shows a musical staff in bass clef with a key signature of one flat and a 4/4 time signature. The notes are G2, A2, B2, C3, D3, E3, F3, G3, A3, B3, C4, D4, E4, F4, G4, A4, B4, C5, D5, E5, F5, G5. Fingerings are indicated above the notes: 0, 2, and Etc.. A slur covers the notes from G2 to G4. Another slur covers the notes from G4 to C5. A third slur covers the notes from G4 to G5. The text '0      2      Etc..' is positioned above the first slur. Below the staff, there are three brackets, each labeled with the number '6', indicating six-note groups.